

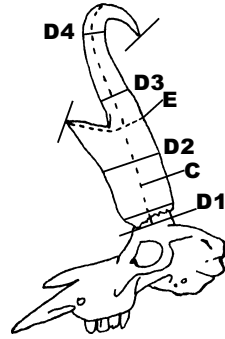
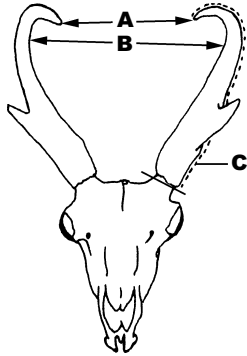
# POPE & YOUNG CLUB



Official Scoring System for Bowhunting North American Big Game

**MINIMUM SCORE**  
67

## PRONGHORN ANTELOPE



SEE OTHER SIDE FOR INSTRUCTIONS			COLUMN 1	COLUMN 2	COLUMN 3
A. Tip to Tip Spread			Right Horn	Left Horn	Difference
B. Inside Spread					
C. Length of Horn					
D-1. Circumference of Base					
D-2. Circumference at First Quarter (taken <b>BELOW</b> prong) (This measurement taken at _____ inches from base)					
D-3. Circumference at Second Quarter (taken <b>ABOVE</b> prong) (This measurement taken at _____ inches from base)					
D-4. Circumference at Third Quarter (This measurement taken at _____ inches from base)					
E. Length of Prong					
<b>TOTALS</b>					
ADD	Column 1	Location of Kill: _____ (County) _____ (State/Prov)			
	Column 2	Date Killed: _____ Hunter: _____			
Subtotal		Owner: _____ Telephone #: ( ) _____			
SUBTRACT Column 3		Owner's Address: _____			
<b>FINAL SCORE</b>		Guide's Name and Address: _____			
		Remarks: (Mention Any Abnormalities or Unique Qualities)			

At the time of official measurement, were the sheaths reattached to the cores by the use of some type of filler or adhesive?  YES  NO

(If "yes," the D-1 value can not exceed the D-2 value on the same horn. If so, enter the actual D-1 measurement in the remarks section and record the D-2 measurement as the D-1 value in its respective column.)

I, \_\_\_\_\_, certify that I have measured this trophy on \_\_\_\_\_

PRINT NAME

MM/DD/YYYY

at \_\_\_\_\_

STREET ADDRESS

CITY

STATE/PROVINCE

ZIP CODE

and that these measurements and data are, to the best of my knowledge and belief, made in accordance with the instructions given.

Witness: \_\_\_\_\_ Signature: \_\_\_\_\_

TO MEASURER'S SIGNATURE

P&Y OFFICIAL MEASURER

ADDRESS

CITY

STATE/PROVINCE

ZIP

## BRIEF INSTRUCTIONS FOR MEASURING PRONGHORN ANTELOPE

Measurements must be made with a flexible steel tape and recorded to the nearest one-eighth of an inch. To simplify addition, please enter fractional figures in eighths and in proper fractions. Refer to **P & Y Measurer's Manual** for a detailed description of measuring procedures.

- A. Tip to Tip Spread** measured between tip of horns.
  - B. Inside Spread of Horns** measured at right angles to the center line of the skull at widest point between horns.
  - C. Length of Horn** is measured on the outside curve, as illustrated. The line taken will vary with different heads, depending on the direction of the curvature. Measure along the center of the outer curve, from tip of horn, to a point in line with the lowest edge of the base, using a straight edge to establish the line end.
  - D-1. Circumference of Base** is measured at right angles to long axis of the horn. Do not follow irregular edge of horn. The line of measurement must be entirely on horn material.
  - D-2-3-4 Circumferences.** Divide measurement of longer horn by four. **Measuring from the base**, mark **BOTH** horns at these quarters even though one horn is shorter, and measure circumferences at these marks. Should D-2 land on the swelling of the prong, take D-2 measurement **immediately below** swelling of prong. Note D-3 **must** be taken above the prong. If D-3 falls on or below the prong, then take this measurement **immediately above** the prong. If adjustments for swelling of prong are made to the D-2 or D-3 measurement, note these adjustments in "REMARKS" section.
  - E. Length of Prong.** Measure from the tip of the prong, **along the upper edge** of the outer side to the horn; then, around the horn, to a point at the rear of the horn where a straight edge across the back of both horns touches the horn. This measurement around the horn, from the base of the prong, should be taken at right angles to the long axis of the horn.
- 

## ENTRY REQUIREMENTS

1. **Original scoring form** completed by an Official Measurer of the Pope & Young Club or the Boone & Crockett Club.
2. **Completed Fair Chase Affidavit.**
3. **Three photos of antlers, horns, or skull** (a view from the front side, a view from the left side and a view from the right side). A field photo is also requested, if possible.
4. **\$25.00 recording fee** (made payable to the Pope and Young Club)

**Drying Period:** To be eligible for entry in the Pope & Young Records, a trophy must first have been stored under normal room temperature and humidity for at least 60 days after date of kill. No trophy will be considered which has been altered in any way from its natural state.