

POPE & YOUNG CLUB



Official Scoring System for Bowhunting North American Big Game

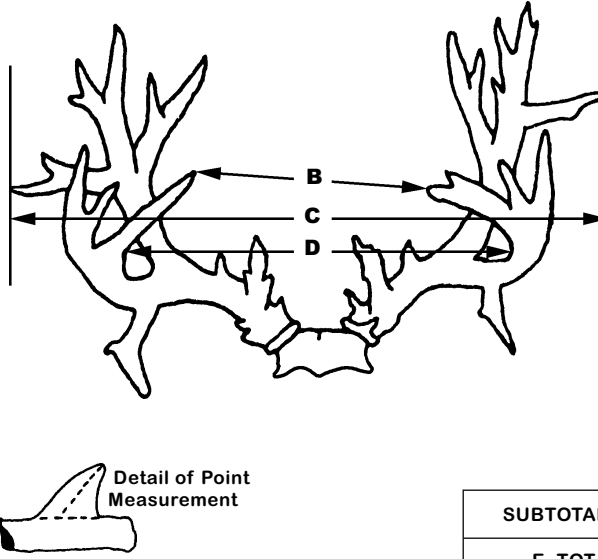
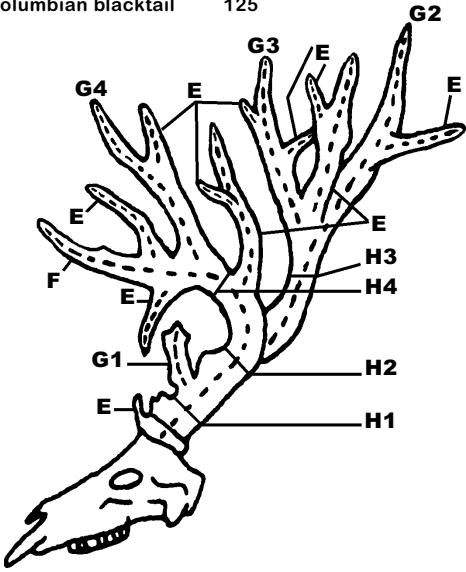
MINIMUM SCORE

mule deer 170
Columbian blacktail 125

NON-TYPICAL MULE DEER AND BLACKTAIL DEER

KIND OF DEER (check one)

- mule deer
- Columbian blacktail
- IN VELVET**



Abnormal Points	
Right Antler	Left Antler
SUBTOTALS	
E. TOTAL	

SEE OTHER SIDE FOR INSTRUCTIONS				COLUMN 1	COLUMN 2	COLUMN 3	COLUMN 4
A. No. Points on Right Antler		No. Points on Left Antler		Spread Credit	Right Antler	Left Antler	Difference
B. Tip to Tip Spread		C. Greatest Spread					
D. Inside Spread of Main Beams		SPREAD CREDIT MAY EQUAL BUT NOT EXCEED LONGER MAIN BEAM					
F. Length of Main Beam							
G-1. Length of First Point, If Present							
G-2. Length of Second Point							
G-3. Length of Third Point, If Present							
G-4. Length of Fourth Point, If Present							
H-1. Circumference at Smallest Place Between Burr and First Point							
H-2. Circumference at Smallest Place Between First and Second Points							
H-3. Circumference at Smallest Place Between Main Beam and Third Point							
H-4. Circumference at Smallest Place Between Second and Fourth Points							
TOTALS							

ADD	Column 1	Location of Kill: :	(County)	(State/Prov)
	Column 2	Date Killed:	Hunter:	
	Column 3	Owner:	Telephone #: ()	
	Subtotal	Owner's Address:		
	SUBTRACT Column 4	Guide's Name and Address:		
	Subtotal	Remarks: (Mention Any Abnormalities or Unique Qualities)		
	ADD Line E Total			
	FINAL SCORE			

I, _____, certify that I have measured this trophy on _____
PRINT NAME MM/DD/YYYY

at _____
STREET ADDRESS CITY STATE/PROVINCE ZIP CODE

and that these measurements and data are, to the best of my knowledge and belief, made in accordance with the instructions given.

Witness: _____ Signature: _____
TO MEASURER'S SIGNATURE P&Y OFFICIAL MEASURER

ADDRESS

CITY STATE/PROVINCE ZIP

BRIEF INSTRUCTIONS FOR MEASURING NON-TYPICAL MULE AND BLACKTAIL DEER

Measurements must be made with a flexible steel tape or steel cable and recorded to the nearest one-eighth of an inch. To simplify addition, please enter fractional figures in eighths and in proper fractions. Refer to **P & Y Measurer's Manual** for a detailed description of measuring procedures.

- A. Number of Points on each antler.** To be counted a point, a projection must be at least one inch long AND, at some location at least one inch from the tip, the length of the projection must exceed its width. Beam tip is counted as a point but not measured as a point.
- B. Tip to Tip Spread** is measured between tips of main beams.
- C. Greatest Spread** is measured between perpendiculars at a right angle to the center line of the skull at widest part whether across main beams or points.
- D. Inside Spread of Main Beam** is measured at a right angle to the center line of the skull at widest point between main beams. Enter this measurement again in "Spread Credit" column if it is less than or equal to the length of longer main beam. If greater, enter longer main beam length for Spread Credit.
- E. Total of Length of Abnormal Points.** Abnormal points are generally considered to be those non-typical in location (such as points originating from a point or from bottom or sides of main beam). Measure in usual manner and enter in appropriate blanks.
- F. Length of Main Beam** is measured from the center of the lowest outside edge of burr over outer curve to the most distant point of the main beam. Begin measuring at the location on the burr where the center line along the outer curve of the beam intersects the burr.
- G-1-2-3-4. Length of Normal Points.** Normal points are the brow points and the upper and lower forks as shown in illustration. They are measured from top edge of beam (baseline), over outer curve, to tip: with the exception of the G-3, which is measured from a baseline established along the edge of the G-2 point. To establish the appropriate baseline, lay a tape or (preferably) a cable on the top edge of the beam on each side of the point and draw a line under the cable to reflect the top edge of the beam, as if the point was not present. Record point lengths in appropriate blanks.
- H-1-2-3-4. Circumferences.** Circumferences are taken at the smallest place between corresponding normal points, as illustrated. If first point is missing, take H-1 and H-2 at smallest place between burr and second point. If third point is missing, take H-3 halfway between the base and tip of second point. If the fourth point is missing, take H-4 halfway between the center of the baseline for the second point and tip of main beam. Circumference measurements must be taken with a steel tape (a cable cannot be used for these measurements).

ENTRY REQUIREMENTS

1. **Original scoring form** completed by an Official Measurer of the Pope & Young Club or the Boone & Crockett Club.
2. **Completed Fair Chase Affidavit.**
3. **Three photos of antlers, horns, or skull** (a view from the front side, a view from the left side and a view from the right side). A field photo is also requested, if possible.
4. **\$25.00 recording fee** (made payable to the Pope and Young Club)

Drying Period: To be eligible for entry in the Pope & Young Records, a trophy must first have been stored under normal room temperature and humidity for at least 60 days after date of kill. No trophy will be considered which has been altered in any way from its natural state.